

Texas Cattle Brush Assembly Instructions

Supplied:

Spring

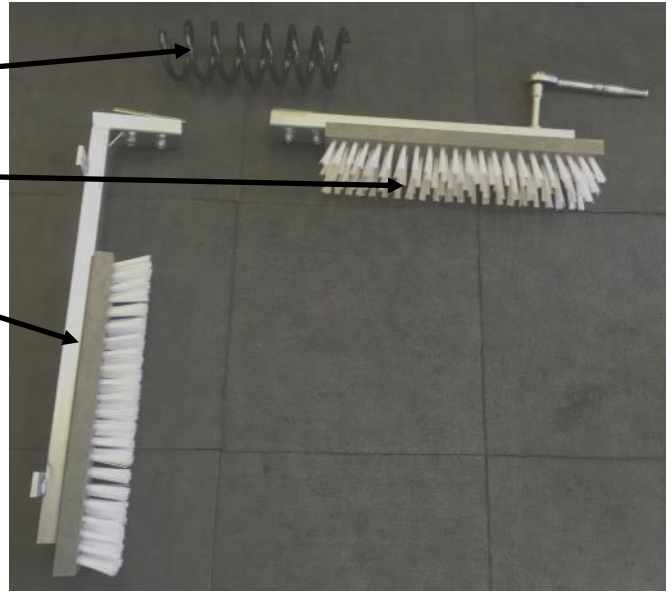
Horizontal brush with fixings

Vertical Brush with fixings

You will also need (not supplied):

2 x size 17 spanners

Wall fixings

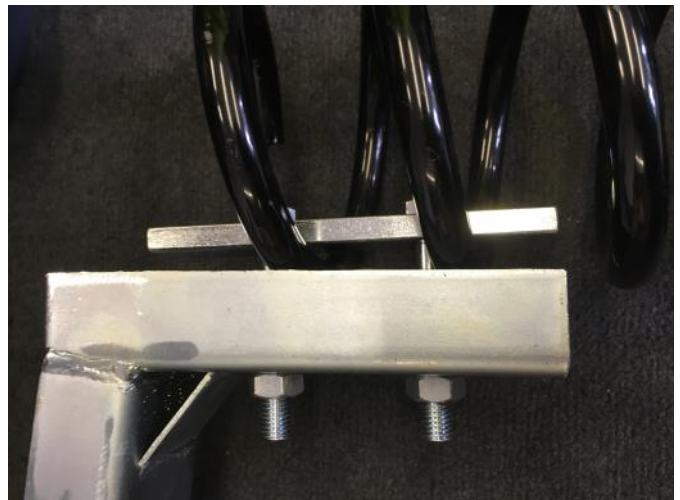


1. Remove the outer bolt from the top of the vertical brush and loosen the inner bolt



2. Place the spring as shown with the first loop to the right of the first bolt and the second loop to the right of the second bolt, held in place by the plate.

Tighten the nuts using a spanner.



Spring held in place when viewed from above.



3. Repeat steps 1 and 2 to fix the horizontal brush onto the other end of the spring.



3. Fix the brush to wall or post (fixings not provided). See below for mounting dimensions.



Mounting Frame Dimensions

